

Chapter 2

Getting Started

Chapter contents

Starting Grape Forecaster the first time	15
Grape Forecaster's Main Menu	17
Data Entry	17
Utilities	18
Reports	18
Configuration	18
MultiClient	18
Help	18
Definitions	19
Vineyard	19
Patch	19
Lot	19
Product Type	19
Delivery	20
Setting up	21
Step 1- My Grape Forecaster Settings	21
Step 2 – Setup Varieties	22
Step 3 – Setup Product Type Names	23
Step 4 – Setup Vineyards and Patches and Rows	24
Editing Vineyard and Patch Information	27
Deleting Vineyards and Patches	28
Step 5 – Setup Lots (if running in “Lot Mode”)	28
Step 6 – Setup Lots for the current Vintage	32
Grape Acquirers List	34
Screen Settings	37
Data Collection Forms	38
Tutorial Exercises	40

Exercise 1: Filling in Patch survey and Vine structure forms	40
Exercise 2: Describing vineyards	48
Exercise 3: Viewing and printing Vineyard summaries	49
Exercise 4: Setting up Lots	49
Exercise 5: Setting up seasons	49

Starting Grape Forecaster the first time



On your computer's desktop you will see the Grape Forecaster icon. Double click it to launch the program. After briefly displaying the "splash screen" which acknowledges the contribution of the organisation behind this software, the Grape Forecaster registration window is displayed.

 A registration dialog box with a blue title bar and a light green background. The title is "Registration". Below the title, it says "Please enter your trading name and other contact details :". There are several input fields: "Trading Name", "Contact Person(s)", "Address" (with a second line below it), "County / Province / State", "Post / Zip Code", "Phone", "Fax", and "Email". At the bottom right, there are "Cancel" and "Save" buttons.

Please take care to enter your details on this form, then click the **Save** button.

Now you will see this "Trial Version" dialog... You can run Grape

 A "Trial Version" dialog box with a blue title bar and a light green background. The title is "Trial Version". Below the title, it says "You have a further 20 runs left." and "To register, print out the registration form, and fax to Fairport. (Details are contained in the printout)". At the bottom, there are three buttons: "Continue", "Print Rego Form", and "Register".

Forecaster 20 times in "Demonstration mode". If you choose to register the software and unlock, click on the **Print Rego Form**

button and fax the printed form to Fairport – You will receive a program unlock number by return fax.

The form printed out by Grape Forecaster contains all the information that you typed into the registration form (shown on the previous page). This information is entered into the Fairport client database so you can receive product information and Fairport Club privileges.

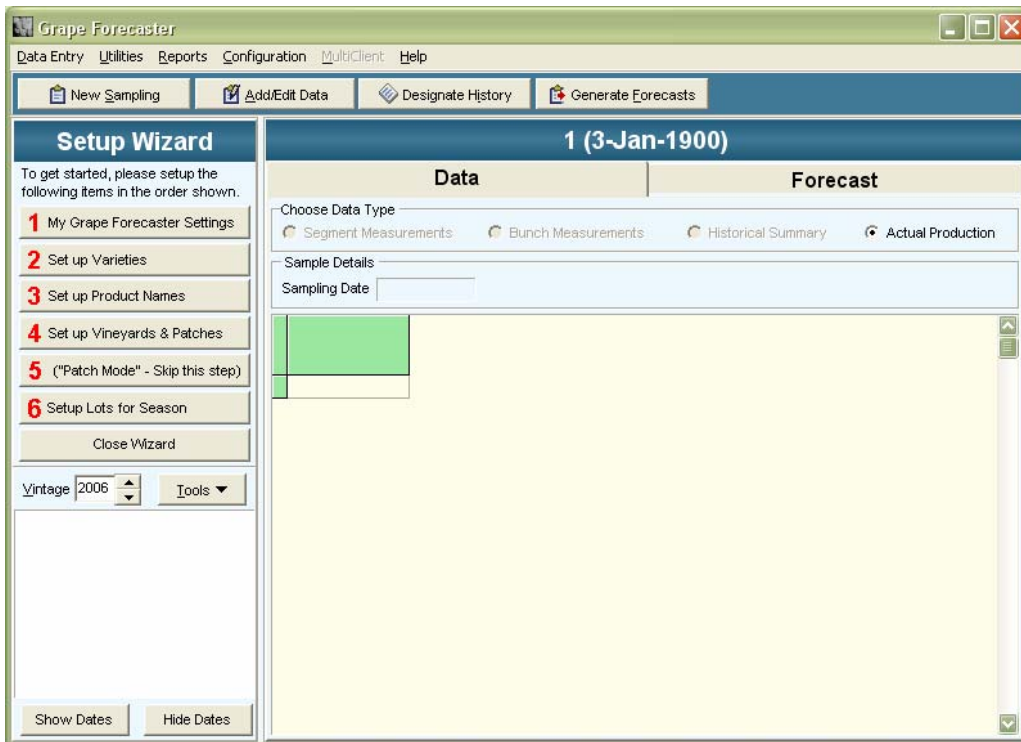
During the 20 “Demonstration Mode” run times, Grape Forecaster will operate without restriction except for the data restoring and data importing functionalities.

Continuing with our Grape Forecaster first run ...

Let’s assume you have clicked on **Continue** to proceed.

You will now see the main screen:

Initially it will look like this:



Note the “Setup Wizard” in the top left section of the screen. This will only be automatically displayed once. It is there to guide you through the steps for setting up Grape Forecaster. If you want to see this “Setup Wizard” the next time you run the software, you can launch it from the Help menu.



Help / Setup Wizard

We will revisit these steps later on page **Error! Bookmark not defined..**

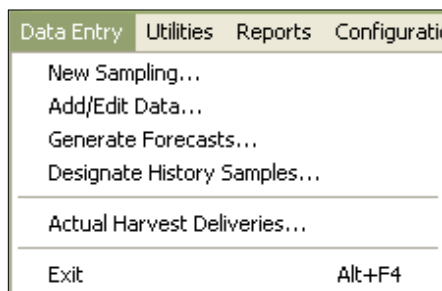
Grape Forecaster's Main Menu

Menus are used in computer software to display a list of options to the user; just like a menu in a restaurant.

Like your restaurant menu the options are (as much as possible) arranged in groups.

The menu options are usually ordered in a sequence so that the most frequently accessed option is listed first. These minor details are all designed to make software easier to use.

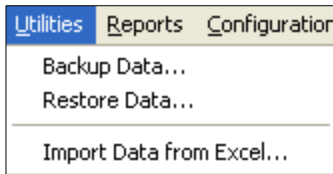
Data Entry



These menu options enable you to enter sampling tasks, generate forecasts and add sample data. These options are also available via the tool bar buttons



Utilities

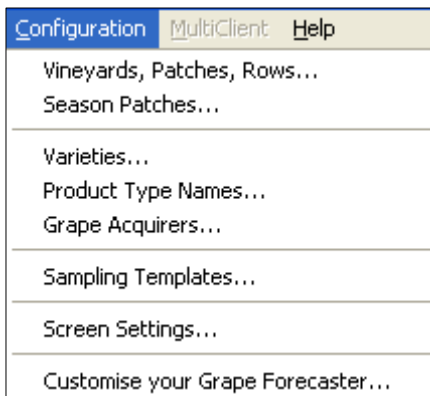


These menu options launch file handling and data management facilities.

Reports

These menu options enable you to generate GrapeForecaster reports.

Configuration



These menu options enable you to set up the various lists (Vineyards, Varieties etc) which Grape Forecaster needs to operate.

The *Screen Settings* option enables you to change the screen colour scheme.

MultiClient

This option enables Grape Forecaster MultiClient users to create and access client datasets.

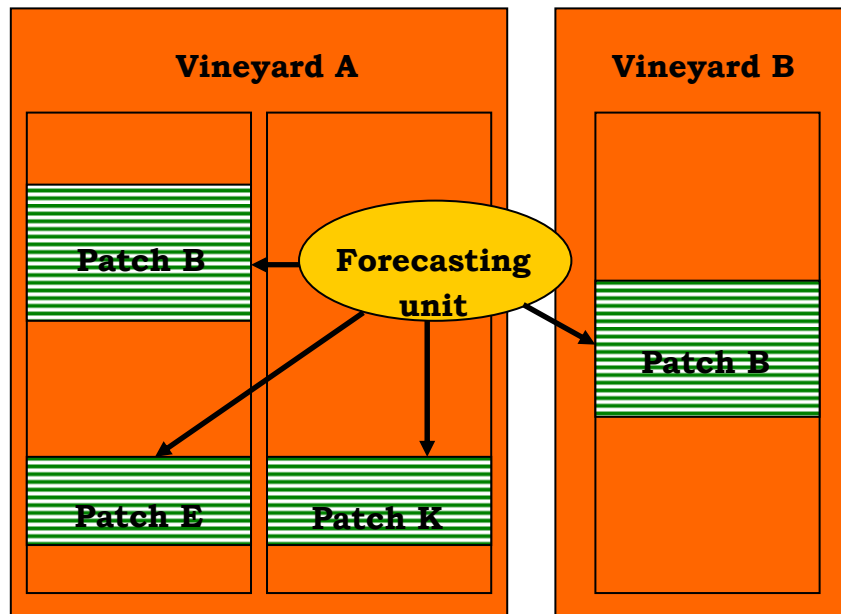
Help

These options enable you access the on-line Help system, launch the "Setup Wizard" and to view the About screen

Before you start the process of setting up our vineyard details, you must have an understanding of some of the Grape Forecaster concepts and terminology.

So, let's take a moment to define some very important terms.

Definitions



Vineyard

A **Vineyard** is a place where a **Patch** of vines can be planted.

Patch

A **Patch** is an area of land that has **Rows** of vines planted in it. The vines in a Patch must all be of the same **Variety** and have the same spacing and general type of vine structure. Patches can be grouped into **Lots**.

Lot

A **Lot** consists of one or more Patches, which may be in any Vineyard. All sampling and forecasting operations are done in relation to a Lot.

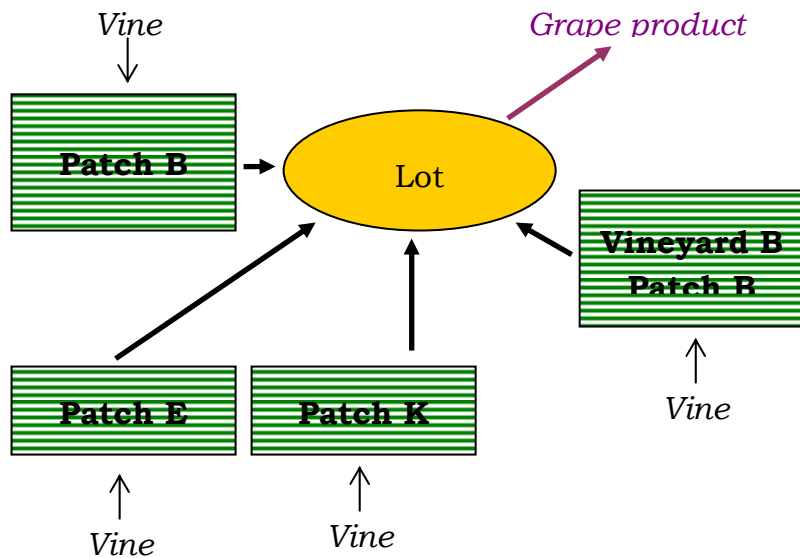
Product Type

A Lot produces one **Product type**. The name of the Product type is independent of the Varieties planted in the Patches in the Lot. A

Product type is a type of grapes which is received at a winery as one **Delivery**.

Delivery

A **Delivery** can be made up of one or more **Loads**, which can be weighed on the same or different days.



The name of the Product type is independent of the Varieties planted in the Patches in the Lot. In many cases you may decide to make some reference to the Varieties planted in the Patches in a Lot, but this is not essential as far as the database is concerned.

For example, if you decide to group all the Patches planted with Chardonnay vines in a Vineyard into one Lot, the name of the Product type produced by that Lot could simply be Chardonnay. However, it would be equally valid to group all the patches planted with vines that produce white grape varieties in a number of vineyards into one Lot and use a Product type name such as Bulk White.

You may also have different groups of Patches that have the same Variety planted in them but will produce grapes that are destined for different purchasers (Grape Acquirers). In this case you could distinguish products with names that identify them by producer and purchaser, e.g. “Smith Chardonnay for Gum Tree Wines” and “Smith Chardonnay for Wattle Wines”.

This distinction between Varieties, Patches, Lots and Product types is designed to give the Forecaster as much flexibility as possible, and should cater for most practical cases. It allows a forecaster to make forecasts at any scale, from a single Patch to the whole world. It could be used, for example to make forecasts for all the Cabernet Sauvignon in a region, with the minimum amount of sampling and measurement to meet a particular accuracy target. With this important information in mind, let's get set up!

Setting up

To help you setting up we have supplied you with the “Setup Wizard”

This will be displayed on your first runtime ... thereafter to see it you must launch it via *Help / Setup Wizard*

Note that item 5 will change to (“Patch Mode” – Skip this step) if you are running in “Patch Mode”. If you are running in “Lot Mode” this button will read “Setup Lots”.

Step 1- My Grape Forecaster Settings

This screen can also be accessed via the *Configuration / Customise your Grape Forecaster* menu option.

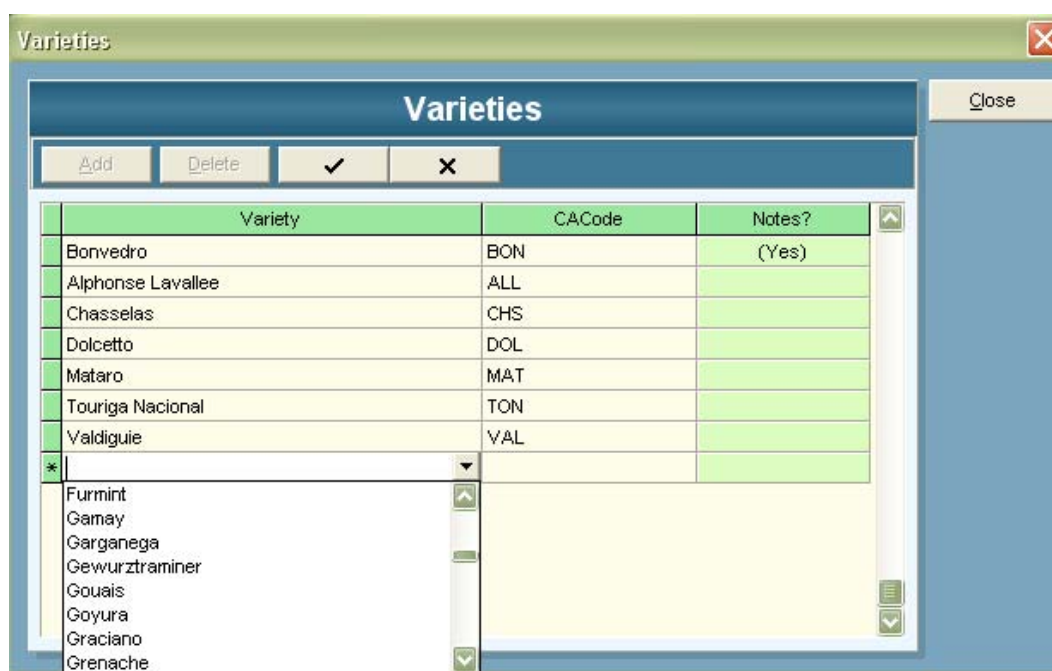
Please read the instructions carefully. The program can operate in two distinct ways.

1. Where production units (Patches of consistent grape variety usually confined to a single block) are either grouped together to create “Lots” (“Lot Mode”) or
2. Where production units are always treated discreetly. They aren’t combined into groups or lots for harvest forecasting purposes. (“Patch Mode”)

Choose your preferred method of operation.

You can also choose your terminology for the production units (called herein “Patches” by default) and also Lots ... of course this would be irrelevant if you are not using the Lot concept for grouping production units together.

Step 2 – Setup Varieties



This setup screen can also be accessed via *Configuration / Varieties*.

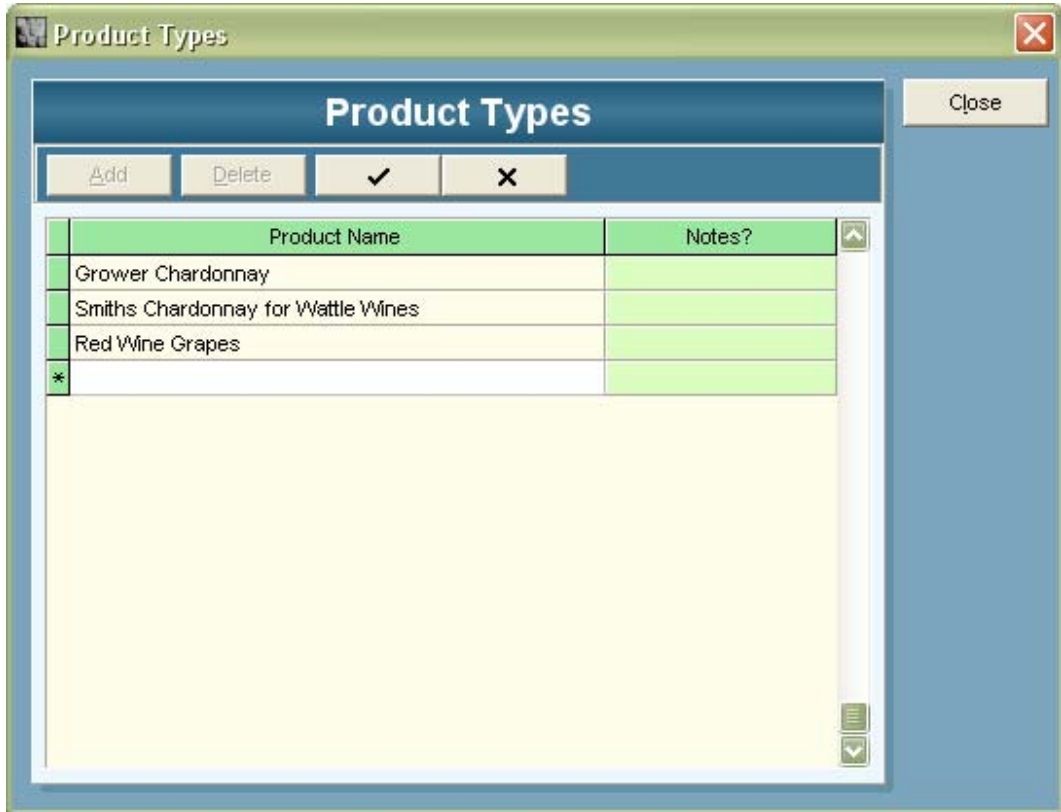
Use the **Add** button to start adding your varieties list. Varieties are selected from the pick list. If a variety is not found in the list you can type the name at the cursor. The Code is required. You will see that varieties selected from the pick list will have a default code.

Finally, click the **Close** buttons to exit.

Notes are added by clicking on the button that appears when you click in the Notes cell on the grid.



Step 3 – Setup Product Type Names



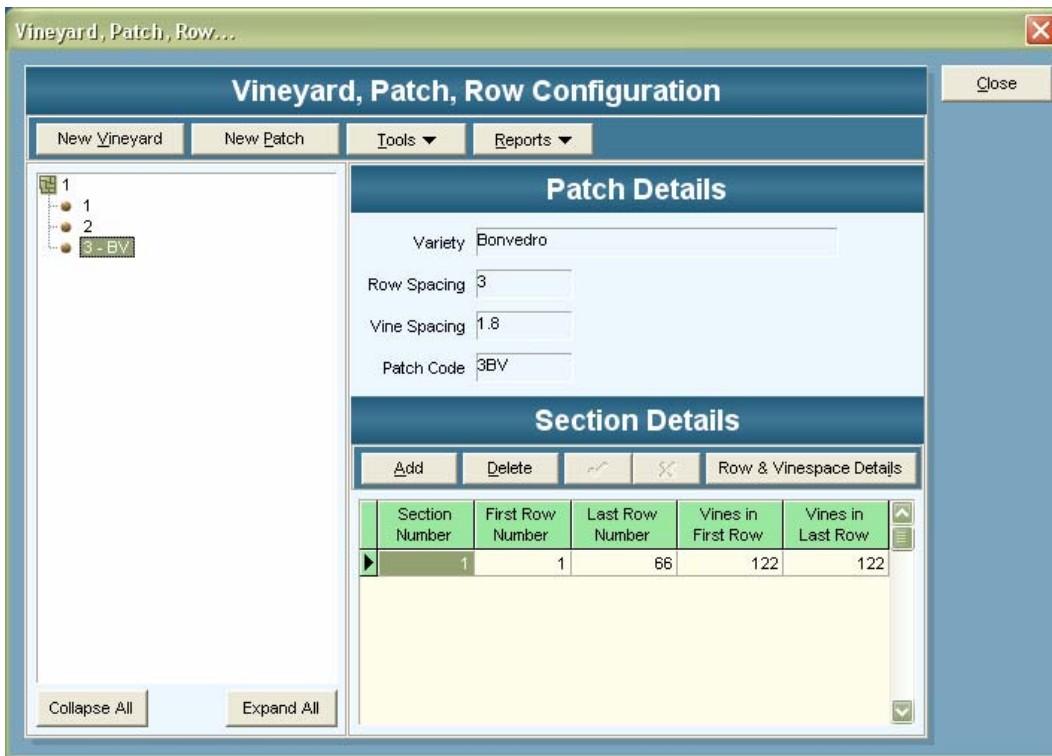
This setup screen can also be accessed via *Configuration / Product Type Names*.

Use the **Add** button to start typing in your varieties list.

Tip: If you press the <Enter> key after typing each product type name, the highlight will jump to the next row and you can begin typing the next product type. Finally, click the **Save** and **Close** buttons to exit.

Notes are added by clicking on the button that appears when you click in the Notes cell on the grid.

Step 4 – Setup Vineyards and Patches and Rows



At this point it is important to guide you to the helpful forms that can be printed out of Grape Forecaster to assist you in the process of gathering the data to ensure that you enter your vineyard, patch and row information correctly.

To print forms to gather vineyard setup data, choose the menu options *Reports / Data Collection Forms / Patch Survey Form*.

For more information see page 34 later in this chapter.

To set up your list of vineyards, patches and rows choose *Configuration / Vineyards, Patches and Rows...* from the main menu.

The screen shown above will be displayed. On this screen

Step 1: Click the **New Vineyard** button to add your first vineyard...



Enter the vineyard name and a vineyard code. The code is used on the handheld computers to save screen space.

Click **OK** when done to save and exit, **Cancel** to exit without saving.

Step 2: Click the **New Patch** button to enter the first patch for the vineyard.

Note the **New** button against the Variety pick list. Use this to add a new variety “on the fly” if you need to.

Click **OK** when done to save and exit, **Cancel** to exit without saving.

Step 3: Enter the row information for this patch.

Section Number	First Row Number	Last Row Number	Vines in First Row	Vines in Last Row
1	1	22	146	146

Click the **Add** button in the “Section Details” area of the Vineyard/Patch setup screen...

The program will automatically insert the section number for you. You just need to enter the First and Last row number for the first patch section (a patch would have more than one section if it was not a regular shape. For example, you might have a section where the rows have 150 vine spaces, then another section where the rows have 170 vine spaces).

Enter the vines per row for the first and last row numbers.
 If your patch is a regular shape but not a rectangle or square (for example a triangle), you would enter different numbers of vines for the first and last row.

For example, your first row might have 100 vines and your last row 150 vines. As shown here:

Section Details				
Add	Cancel	Delete	Row & Vinespace Details	
Section Number	First Row Number	Last Row Number	Vines in First Row	Vines in Last Row
1	1	13	100	150

Grape Forecaster generates vines per row values for you automatically.

Row Details				
History of Row Changes				Close
<input checked="" type="checkbox"/> Automatically record row changes to history file				
Row Details				
Section Number	Row Number	Vine Spaces	In Use?	
1	1	100	<input checked="" type="checkbox"/>	
1	2	104	<input checked="" type="checkbox"/>	
1	3	108	<input checked="" type="checkbox"/>	
1	4	112	<input checked="" type="checkbox"/>	
1	5	117	<input checked="" type="checkbox"/>	
1	6	121	<input checked="" type="checkbox"/>	
1	7	125	<input checked="" type="checkbox"/>	
1	8	129	<input checked="" type="checkbox"/>	
1	9	133	<input checked="" type="checkbox"/>	
1	10	137	<input checked="" type="checkbox"/>	
1	11	142	<input checked="" type="checkbox"/>	
1	12	146	<input checked="" type="checkbox"/>	

Now, if you click the **Row & Vinespace Details** button you'll see this:

Here you choose to exclude certain rows from the patch by un-ticking the "In Use?" column check box for those rows.

You can edit the vine space numbers for rows. To do that, simply click on the

Row-Vinespace cell and edit the number of vines ...

If you need to make changes of record row information after you have begun recording yield forecasting data, do so by

Row Details		
Row Number	Vine Spaces	In Use?
1	100	<input checked="" type="checkbox"/>
2	100	<input checked="" type="checkbox"/>
3	105	<input checked="" type="checkbox"/>
4	110	<input checked="" type="checkbox"/>
5	117	<input checked="" type="checkbox"/>
6	121	<input checked="" type="checkbox"/>
7	125	<input checked="" type="checkbox"/>
8	129	<input checked="" type="checkbox"/>
9	133	<input checked="" type="checkbox"/>

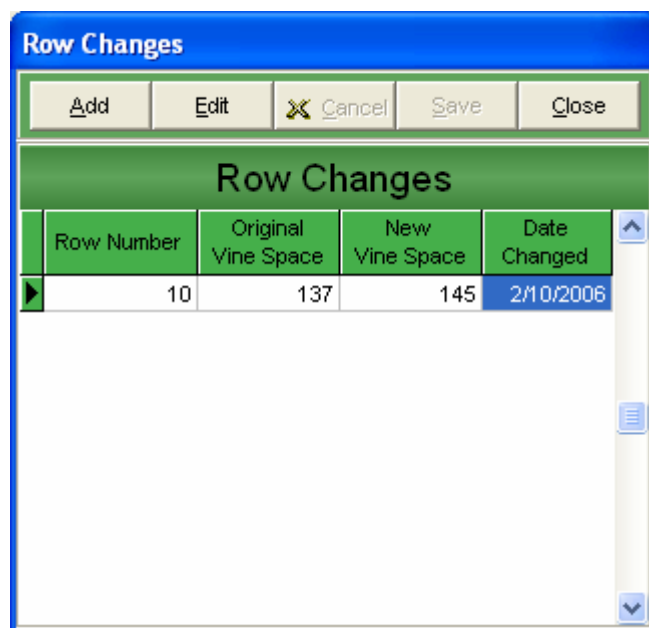
clicking the **Add/Edit Row Changes** button.

Prior to entering sampling data for the first time you can make changes to the vine space values here.

Changing the vine space numbers for rows.

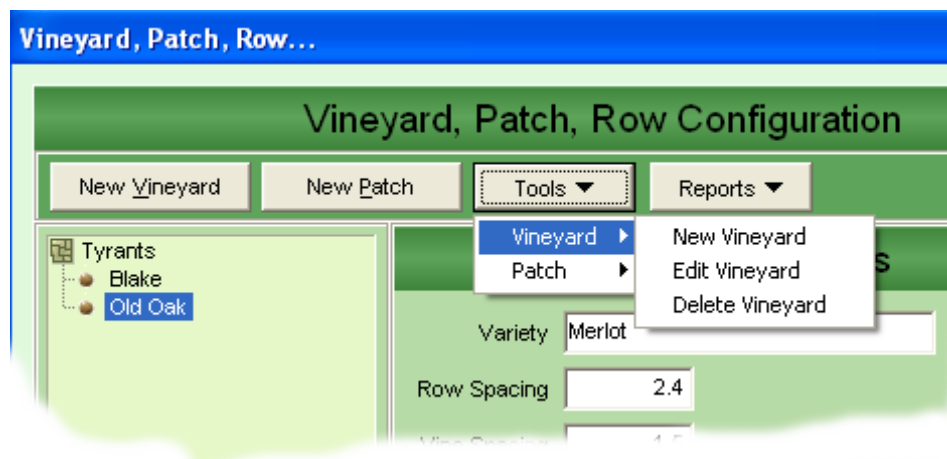
Here I have edited the vine spaces values for the 2nd, 3rd and 4th rows.

Should you need to return to this screen later to record changes to row – vine space data, click the “Automatically Record Row Changes to History File” check box. This will ensure that there is an audit trail of your changes. To view these changes click **History of Row Changes** button to show this form:



You can also make changes in this window using the **Add** button

Editing Vineyard and Patch Information



To edit your vineyard or patch information, use the **Tools** button to show the *Edit Vineyard* and *Edit Patch* options.

You can also edit vineyard and patch information by double clicking your left mouse button on the vineyard / patch list on the left side of the screen.

Deleting Vineyards and Patches

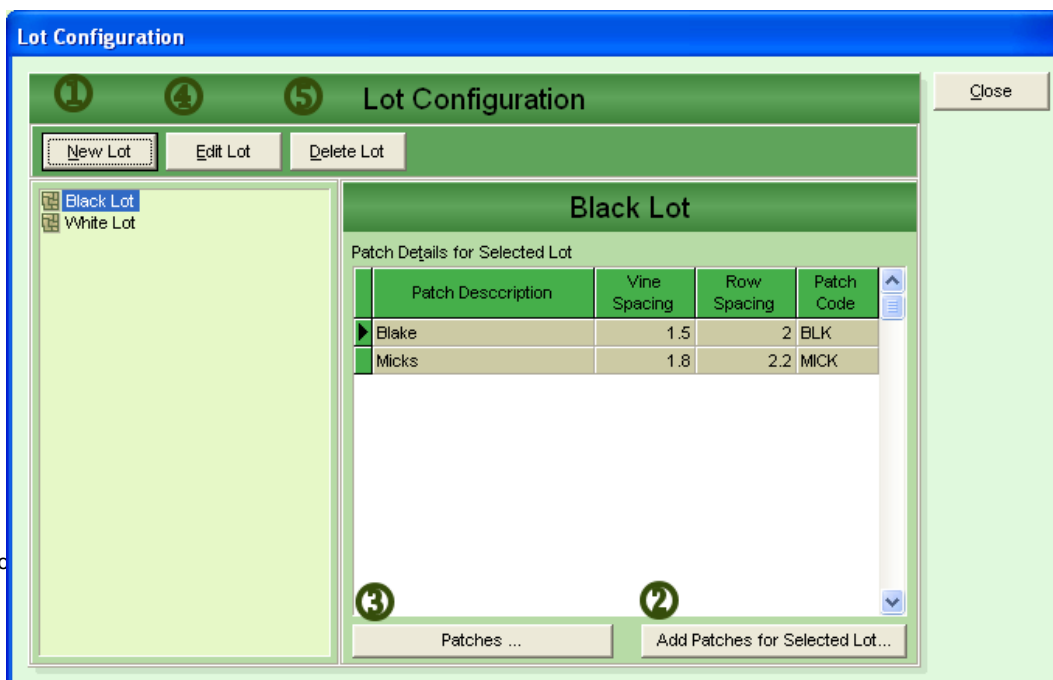
Please note: Once you have created Lots from Patches (if you are using Grape Forecaster in that mode. See Page 21 for Grape Forecaster modes) and entered sampling data against either Lots or Patches, you will not be able to delete those Patches.

To remove unwanted Patches, you must first delete samplings and lots that have used those Patches. A Vineyards can only be deleted once all Patches in the Vineyard have been deleted.

Delete Vineyards and Patches using the **Tools** menu options on the Vineyards, Patches and Rows setup screen.

Step 5 – Setup Lots (if running in “Lot Mode”)

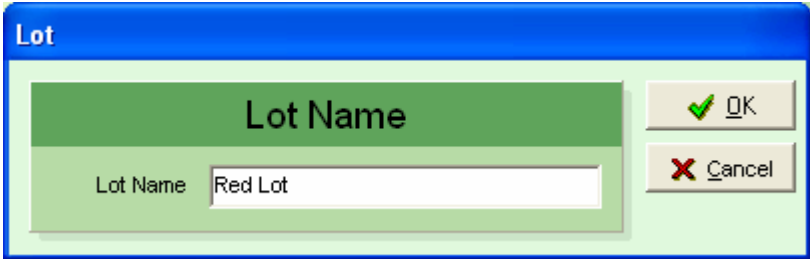
If you chose to use Grape Forecaster in the mode which enables you to group Patches into Lots (“Lot Mode”), you must set up Lots.



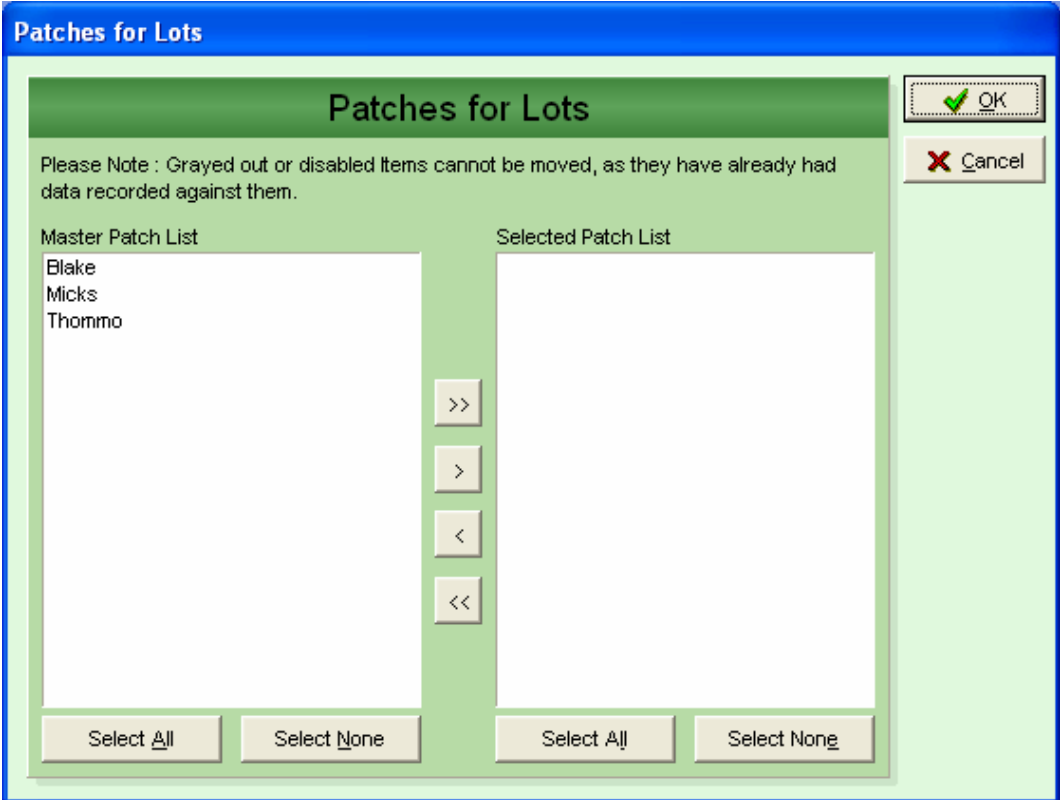
See the Lot definition on page 19. To setup Lots go to

Configuration / Lots... This will display the Lot Configuration screen.

- ① To create a new Lot, click on **New Lot**. This will display the small form where you enter the name for the new Lot



- ② To select the Patches that belong to the new Lot click on



Add Patches for Selected Lot. This will display the form shown here

To choose Patches for the new Lot

Either:

- Double click the Patch name in the “Master Patch List” or
- Click once to highlight one or more Patches, then either click on the > button or press your keyboard space bar to move your selected Patches to the “Selected Patch List”.

The Select All, Select None, >> and << buttons are there to make the selection tasks easier.

Please Note: Once you have recorded sampling data for a Patch within any Lot, you are unable to remove that Patch from the Lot.

Patches that have had data recorded against them are shown in grey text...



Other buttons on the “Lot Configuration” screen:

- ③ **Patches...** This button will access the Vineyards, Patches and Rows setup screen. Use this if you need to create or edit a Patch.
- ④ **Edit ..** Use this button to edit the selected Lot name
- ⑤ **Delete..** Use this button to delete the selected Lot.

Please Note: You can only delete Lots that have not yet had sampling data entered against them.

Step 6 – Setup Lots for the current Vintage

If you are running Grape Forecaster in “Lot Mode”:

For each new vintage you must set up the list of Lots you will be sampling. The Vintage – Lot setup screen is accessed via the *Configuration / Vintage Lots...* menu option.

If you are running Grape Forecaster in “Patch Mode” the menu option to access will be *Configuration / Vintage Patches...* and the screen labels will be altered to display “Patch” where they show “Lot” in the screen image below:

Patch Description	Sectors	Sector Length (m)
Blake	2	2
Micks	2	2

Please Note: To set up a Lot (or Patch) for a Vintage you need to provide some information that is used to set up samplings. This information can be different for each season. You need to specify the product type, the acquirer name and the number of Sectors and their maximum length for each Patch in the Lot. This information could come from completed Vine structure forms.

Steps:

1. Pick the Vintage using the spinner buttons
2. Select the Lots (or Patches if you are running in “Patch Mode”) you will be using for the selected Vintage by clicking

the **Select Lots** button. See on the next page the select lots screen for more details.

3. On returning from selecting the Lots, enter the sectors and sector lengths for the Patch or Patches in the selected Lots.
4. Choose the Product Type name for each Lot.
5. Select the Grape Acquirer for each Lot.
6. Enter the Contract Number (if applicable) for each Lot.

If you need to set up new Product Types or add names to your Acquirer's list .. use the **Product Types** and **Acquirers** buttons.

To choose the Lots for the Vintage (Step 2 above) click on the **Select Lots** (or **Select Patches** if running in "Patch Mode") button to display this screen:

Lots for Season - 2006

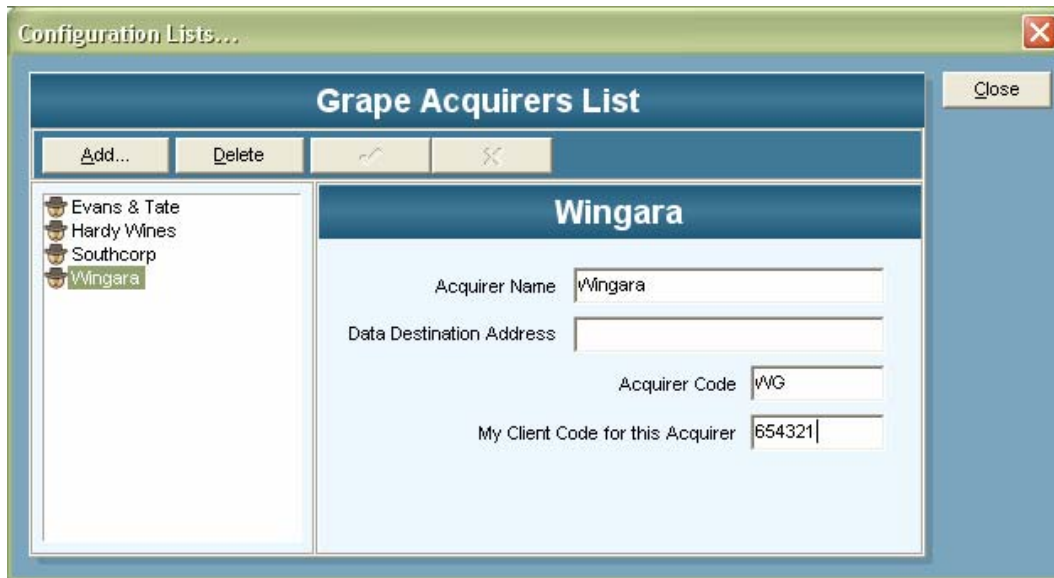
Please Note : Grayed out or disabled Items cannot be moved, as they have already had data recorded against them.

Master Lot List		Selected Lot List
1 2 3 3 - BV Shiraz / BVRC30	<div style="margin-bottom: 5px;">>></div> <div style="margin-bottom: 5px;">></div> <div style="margin-bottom: 5px;"><</div> <div style="margin-bottom: 5px;"><<</div>	
<div style="display: inline-block; border: 1px solid gray; padding: 2px 10px; margin-right: 10px;">Select <u>A</u>ll</div> <div style="display: inline-block; border: 1px solid gray; padding: 2px 10px;">Select <u>N</u>one</div>		<div style="display: inline-block; border: 1px solid gray; padding: 2px 10px; margin-right: 10px;">Select <u>A</u>ll</div> <div style="display: inline-block; border: 1px solid gray; padding: 2px 10px;">Select <u>N</u>ong</div>

Your Grape Forecaster is now ready to set up samplings. Information on setting up Samplings can be found in Chapter 3.

Grape Acquirers List

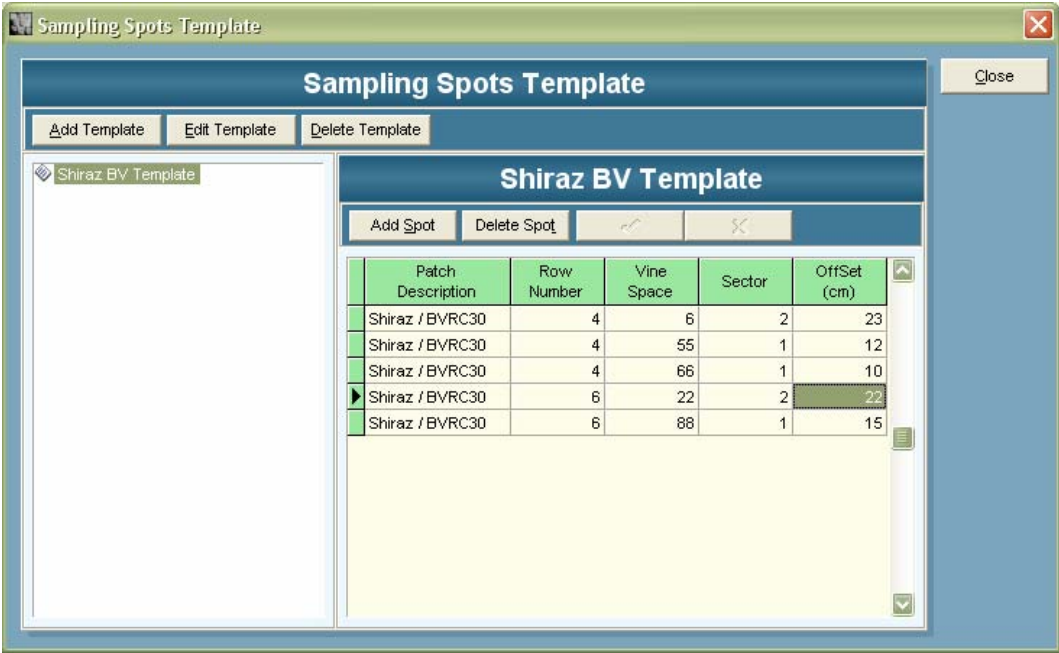
To setup a list of your grape acquirers go to *Configuration / Grape Acquirers...* This will display the Grape Acquirers List Configuration screen.



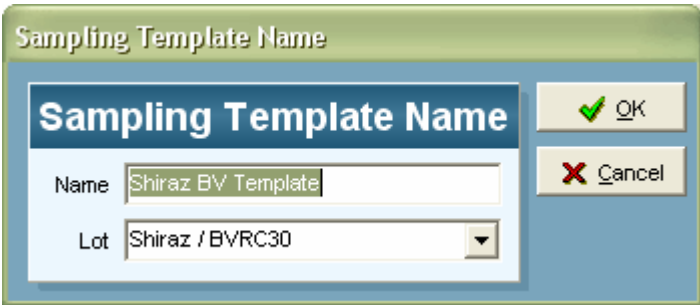
Use the Add button to add the names of the companies you supply. The codes and data destination address fields are intended for future use. In the future you will be able upload your grape forecast data to a central web site to keep your grape acquirers better informed.

Sampling Templates

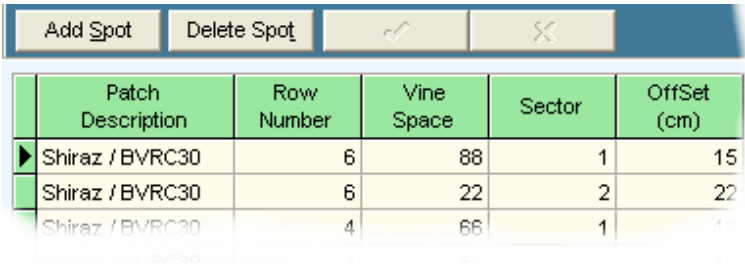
By default, Grape Forecaster is designed to generate random sample spots for you. However to setup a list of your own sampling spots we provide you with the Sampling Spots Template designer... go to *Configuration / Sampling Templates ...* This will display the following screen.



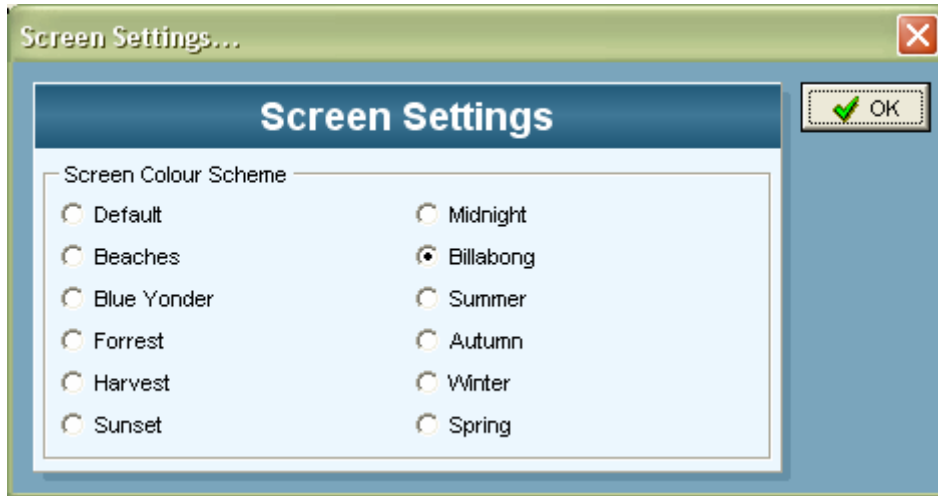
Use the **Add Template** button to start. Give your template a name and select the Lot or Patch (depending on your chosen "mode")



Now use the **Add Spot** button to build the template. Selecting the Patch then the row numbers, vinespaces etc.



Screen Settings



Grape Forecaster has a number of colour schemes for you to choose from and other options to change the appearance of the screens to suit your taste... You can even hide the main tool bar if you desire.

Grape Forecaster has been designed to run on screens with their resolution set to 800 x 600 or greater.

To gain a better understanding of the term screen resolution look in your windows help system...

In Windows do this :

- ◆ Click on the *Start* button
- ◆ Select *Help* from the menu
- ◆ Click on the *Index* tab and type in... resolution and then click *Display*. Follow the help instruction from there.

You can also get to the screen settings by right clicking your mouse on your Windows “Desktop” area... then select *Properties* from the little pop-up menu.

The higher the resolution the greater the number of pixels you will display on your screen.

Data Collection Forms

For the form to gather vineyard setup data, choose the menu options *Reports / Data Collection Forms / Patch Survey Form*. This option will generate the following form:

The screenshot shows a 'Report Previewer' window with a blue title bar and a green toolbar. The toolbar contains icons for home, back, forward, print, and a 'Close' button. The main content area is titled 'Patch Survey Form' and includes the following fields:

- Vineyard
- Block
- Patch
- Row Spacing (with a 'metre s' label)
- Vine Spacing (with a 'metre s' label)
- Surveyed by
- Date

Below these fields is a large 'Sketch plan' area. At the bottom of the form is a table with the following structure:

Section Number	Number of first row	Number of last row	Vines in first row	Vines in last row

The window footer indicates 'Page 1 of 1'.

Print it by clicking on the printer button.

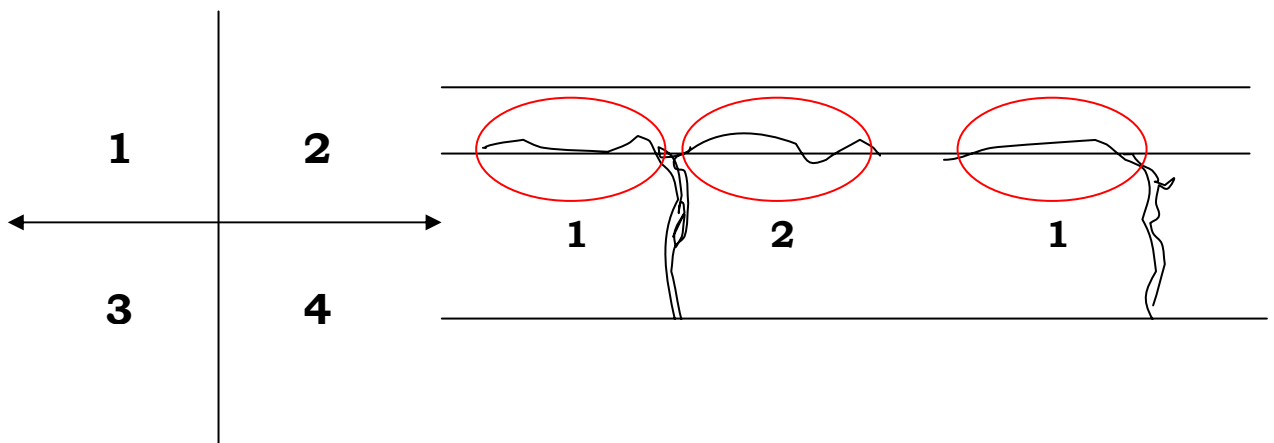
All of the information asked for on the forms is necessary.

Each Row must be given a number (not a letter). When surveying a Patch, count the spaces allocated to each vine, not just the vines themselves. You don't need to count every vine in every row. You can break a patch up into sections; count the vines in the rows at the beginning and end of each section. When you enter this data,

Grape Forecaster will work out how many vines are in each row between.

Grape Forecaster uses the Row numbers and number of vine-spaces in each row when it sets up forms for sampling, and also the Row and Vine spacing in forecasting calculations. When it sets up a sampling form, Grape Forecaster not only selects random Row and Vine 'sites', but also random 'spots' within each vine. You will need to look at the vines in each Patch as being divided into a number of sectors which have an average sector length. This can change from Season to Season.

If the vineyard is not trellised, in a bush vine system, the vines can be divided into any number of sectors like sections of a pie, looking at the vine with a birds-eye view. In trellised vineyard patches, where vines are trained along the row, they are usually divided into 2 sectors either side of the vine trunk. Where vines are trained one way along a wire (e.g. unilateral cordon), there would be only 1 sector.



Grape Forecaster will select a random number between 1 and the number of sectors in each vine. Each physical sector position in the vineyard can be assigned a number, which then becomes part of the 'address' of the sampling location.

A spot within each sector is also specified as an 'offset' from a reference point in the vines (usually the trunk). Grape Forecaster will select a random number between 0 and a 'sector length' that

you specify. This is the average space allocated for each sector. Where vines are trained 2 ways along a row, the sector length would normally be half the vine spacing. Where vines are trained 1 way along a row, the sector length would be equal to the vine spacing.

Tutorial Exercises

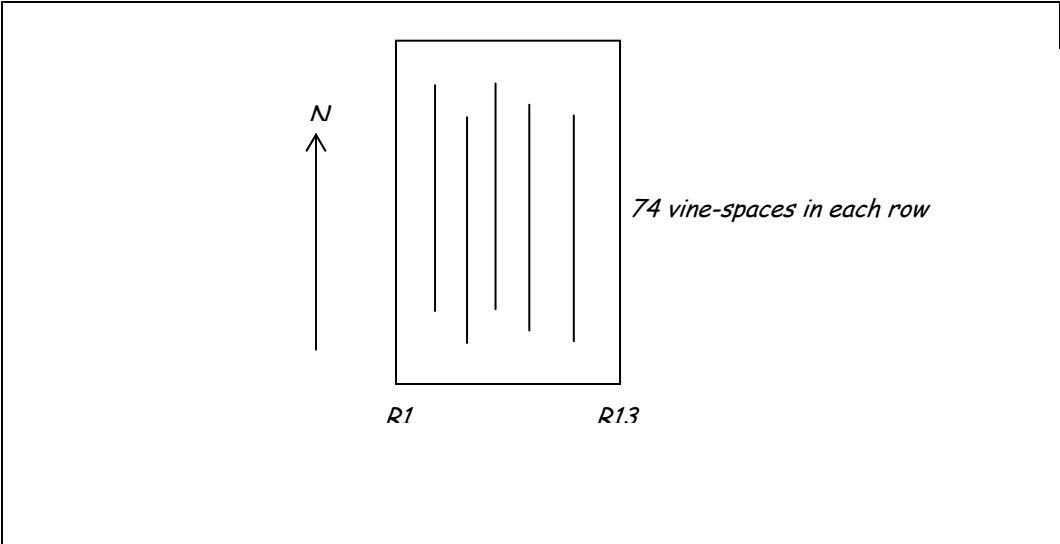
Exercise 1: Filling in Patch survey and Vine structure forms

The examples of completed forms on the following pages are needed for the Exercises in this Guide.

Patch survey

Vineyard	<i>Yellow Box</i>	
Patch name	<i>Shiraz</i>	
Patch code	<i>SH</i>	
Variety	<i>Shiraz</i>	
Row spacing	<i>3.35</i>	metres
Vine spacing	<i>2.13</i>	metres
Surveyed by	<i>Steve Martin</i>	
Date	<i>1/10/97</i>	

Sketch diagram of patch



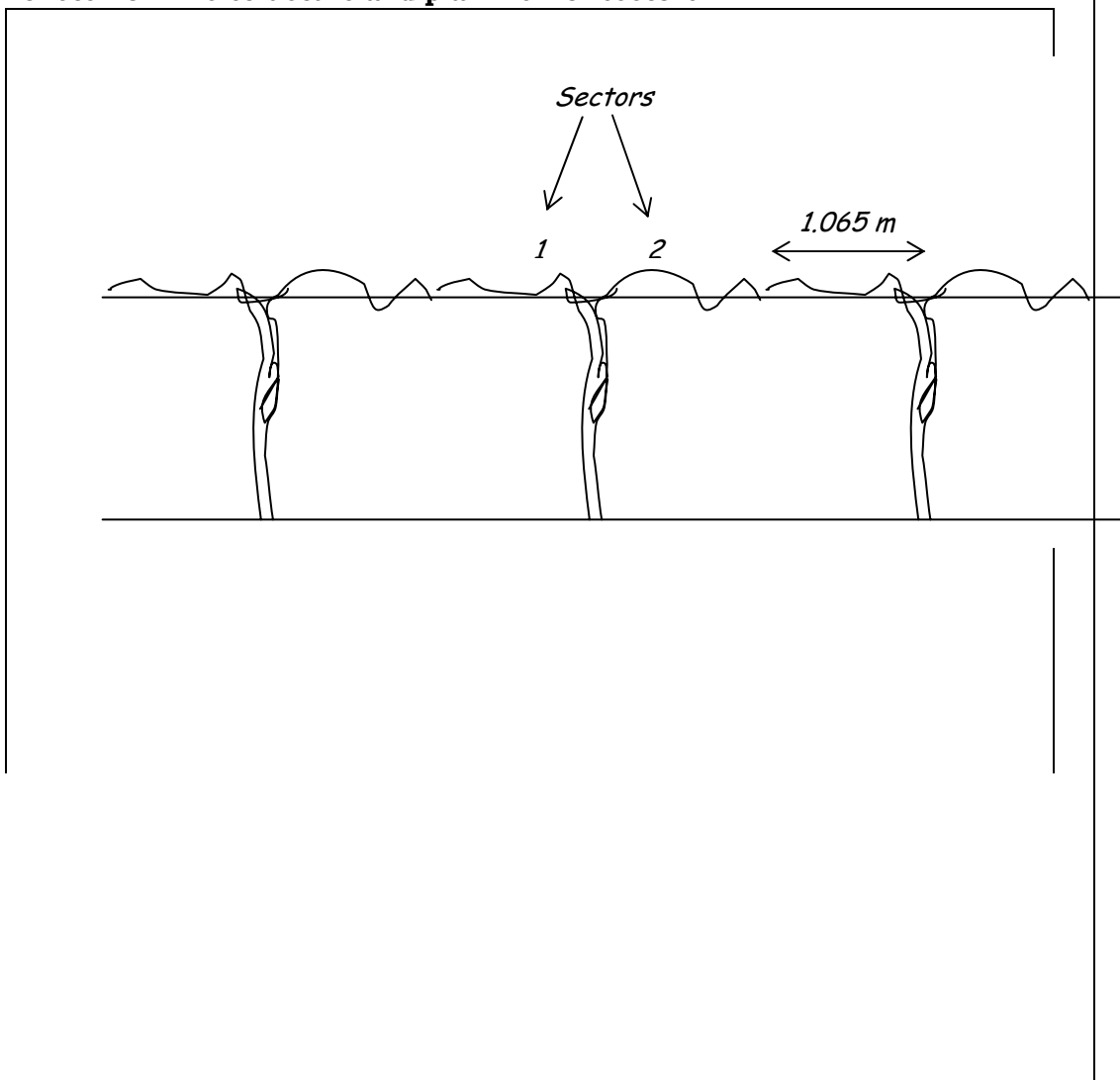
Row details

Section number	Number of first row	Number of last row	Vines in first row	Vines in last row
<i>1</i>	<i>1</i>	<i>13</i>	<i>74</i>	<i>74</i>

Vine structure

Vineyard	<i>Yellow Box</i>	
Patch	<i>Shiraz and Chardonnay</i>	
Sectors	<i>2</i>	number
Sector length	<i>1.065</i>	metres
Surveyed by	<i>Steve Martin</i>	
Date	<i>1/10/97</i>	
For season	<i>1998</i>	

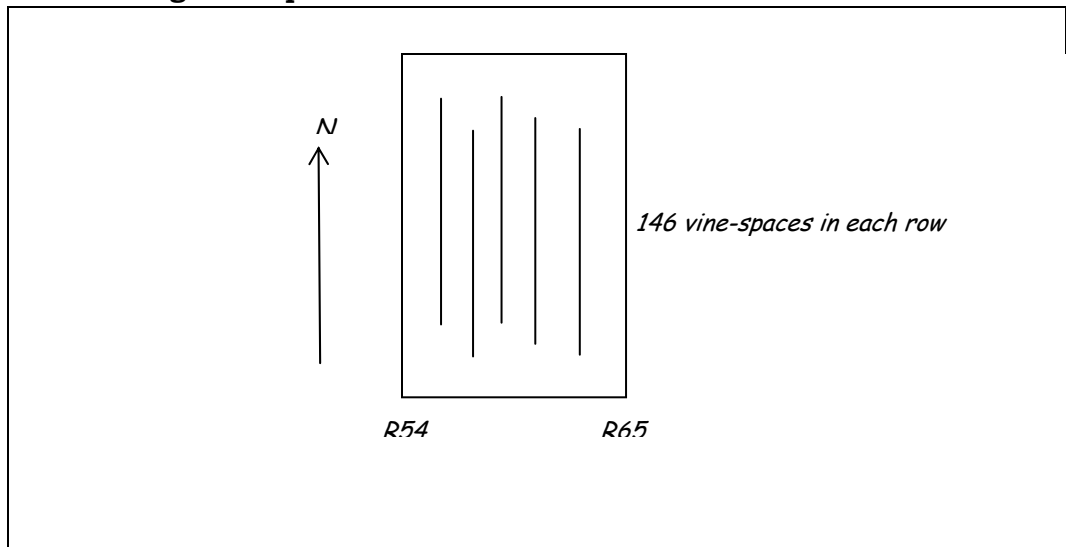
Sketch of vine structure and plan view of sectors



Patch survey

Vineyard	<i>Yellow Box</i>	
Patch name	<i>Chardonnay</i>	
Patch code	<i>CH</i>	
Variety	<i>Chardonnay</i>	
Row spacing	<i>3.35</i>	metres
Vine spacing	<i>2.13</i>	metres
Surveyed by	<i>Steve Martin</i>	
Date	<i>1/10/97</i>	

Sketch diagram of patch



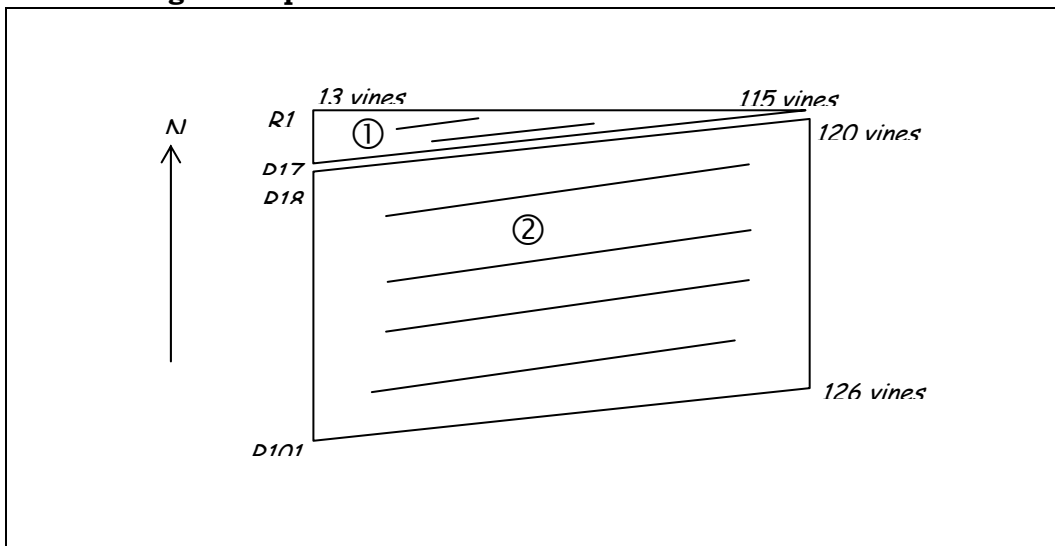
Row details

Section number	Number of first row	Number of last row	Vines in first row	Vines in last row
<i>1</i>	<i>54</i>	<i>65</i>	<i>146</i>	<i>146</i>

Patch survey

Vineyard	<i>Red Gum</i>	
Patch name	<i>Shiraz A</i>	
Patch code	<i>SH A</i>	
Variety	<i>Shiraz</i>	
Row spacing	<i>2.75</i>	metres
Vine spacing	<i>2.00</i>	metres
Surveyed by	<i>Steve Martin</i>	
Date	<i>1/10/97</i>	

Sketch diagram of patch



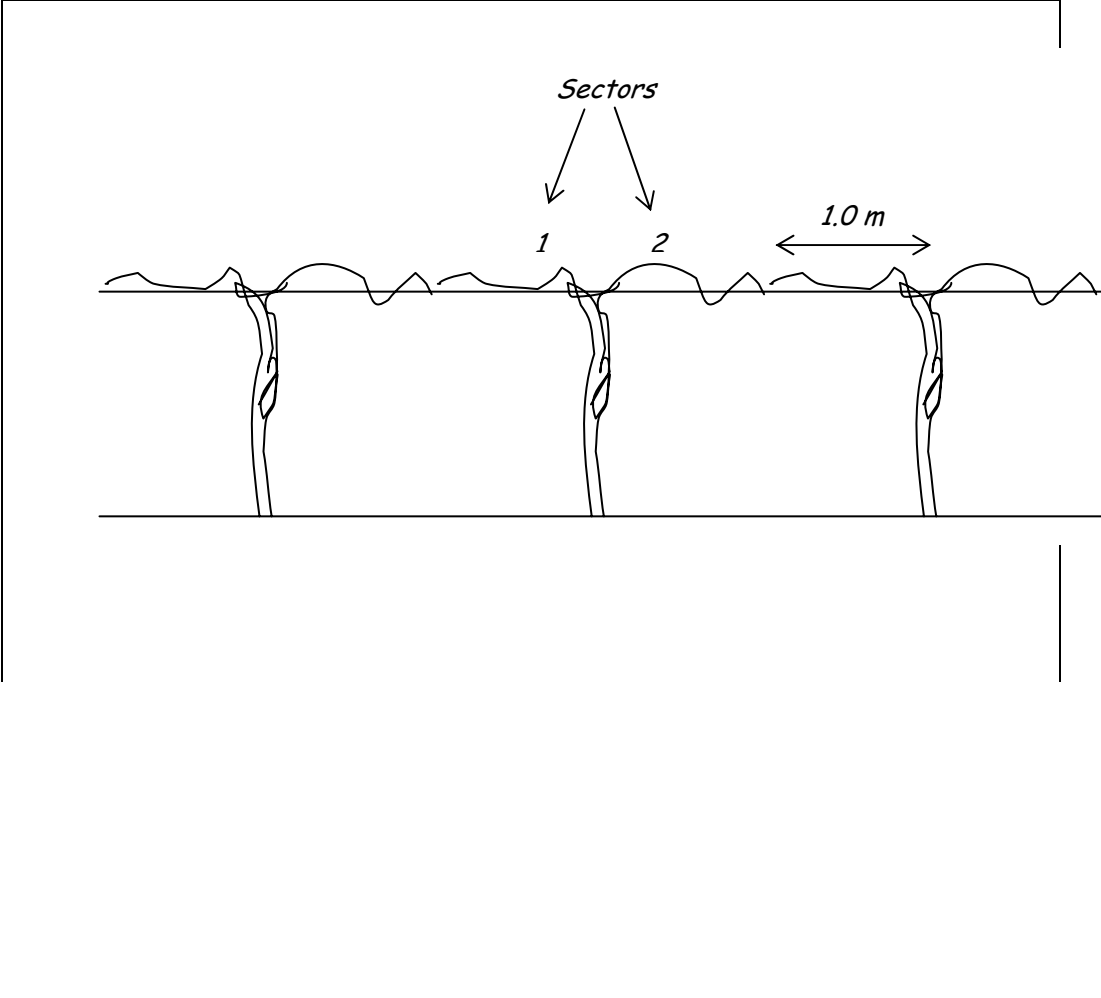
Row details

Section number	Number of first row	Number of last row	Vines in first row	Vines in last row
<i>1</i>	<i>1</i>	<i>17</i>	<i>13</i>	<i>115</i>
<i>2</i>	<i>18</i>	<i>101</i>	<i>120</i>	<i>126</i>

Vine structure

Vineyard	<i>Red Gum</i>	
Patch	<i>Shiraz A</i>	
Sectors	<i>2</i>	number
Sector length	<i>1.0</i>	metres
Surveyed by	<i>Steve Martin</i>	
Date	<i>1/10/97</i>	
For season	<i>1998</i>	

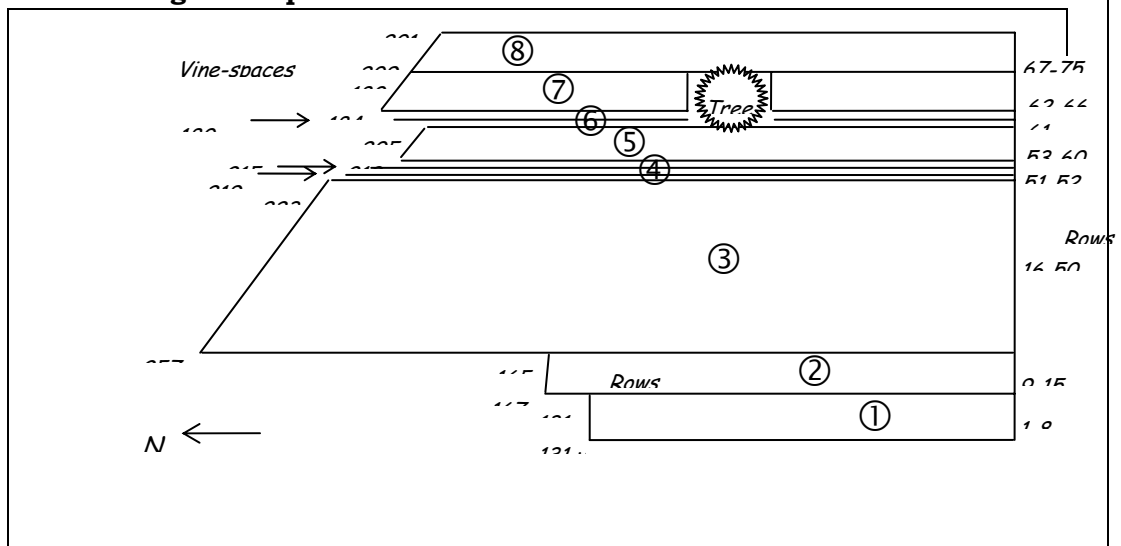
Sketch of vine structure and plan view of sectors



Patch survey

Vineyard	<i>Red Gum</i>	
Patch name	<i>Shiraz B</i>	
Patch code	<i>SH B</i>	
Variety	<i>Shiraz</i>	
Row spacing	<i>3.0</i>	metres
Vine spacing	<i>1.5</i>	metres
Surveyed by	<i>Steve Martin</i>	
Date	<i>1/10/97</i>	

Sketch diagram of patch



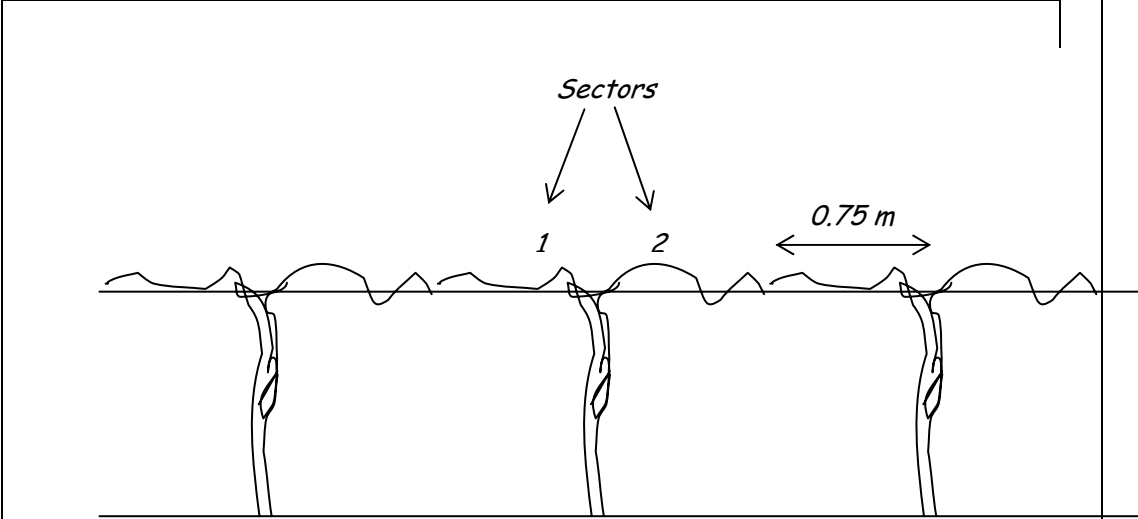
Row details

Section number	Number of first row	Number of last row	Vines in first row	Vines in last row
<i>1</i>	<i>1</i>	<i>8</i>	<i>131</i>	<i>131</i>
<i>2</i>	<i>9</i>	<i>15</i>	<i>167</i>	<i>165</i>
<i>3</i>	<i>16</i>	<i>50</i>	<i>257</i>	<i>223</i>
<i>4</i>	<i>51</i>	<i>52</i>	<i>219</i>	<i>215</i>
<i>5</i>	<i>53</i>	<i>60</i>	<i>212</i>	<i>205</i>
<i>6</i>	<i>61</i>	<i>61</i>	<i>180</i>	<i>180</i>
<i>7</i>	<i>62</i>	<i>66</i>	<i>184</i>	<i>180</i>
<i>8</i>	<i>67</i>	<i>75</i>	<i>209</i>	<i>201</i>

Vine structure

Vineyard	<i>Red Gum</i>	
Patch	<i>Shiraz B</i>	
Sectors	<i>2</i>	number
Sector length	<i>0.75</i>	metres
Surveyed by	<i>Steve Martin</i>	
Date	<i>1/10/97</i>	
For season	<i>1998</i>	

Sketch of vine structure and plan view of sectors



Exercise 2: Describing vineyards

1. Go to the Demonstration Data by choosing *Utilities / Switch to Demonstration Data*
2. For the details you need to complete this exercise refer to the completed examples of Patch Survey forms in the Exercise 1 above.
3. Under *Configuration / Vineyards, Patches and Rows ...*Create a Vineyard called “Yellow Box”.
4. Create a Patch called “Shiraz” in the Yellow Box vineyard.
5. Create New row sections as per the Patch Survey form.
6. Click on the Row list and note that the Rows have been set up for the Patch.
7. Click on an individual Row in the list and view the information about it.

In this exercise we will not edit any Row information, but you can experiment with deleting Rows and adding them again if you have not scheduled a Sampling for a Lot that has this Patch in it. You can also experiment with changing the number of vine spaces in the Row.

8. Click on the **Row and Vine space Details** button.

In this exercise we will not edit any row information, but note here that you can use the row editor to edit the number of vine-spaces in a row in a spreadsheet type of format, tell Grape Forecaster to ignore the presence of a Row or delete rows.

Please Note that deleting a row is done on the Vineyard setup screen by simply changing (reducing) the number rows in a patch section.

9. Within the Yellow Box vineyard, create another Patch called Chardonnay and enter its row details, referring to the Patch survey form.
10. Create a Vineyard called Red Gum
11. Create and Patches within the Red Gum vineyard called Shiraz A and Shiraz B, and enter their row details referring to the Patch survey forms.

Exercise 3: Viewing and printing Vineyard summaries

1. Make sure you are working in the *Configuration / Vineyards, Patches and Rows* window.
2. Click on *Reports / Vineyard Summary Report* to view the report. Note that you can print this report. Try that...
3. Close the "Report Preview" window.
4. Click on *Reports / Vineyard Patch Row Detail Report*. Now close the report preview window.
5. Click on the "Close" button to close the *Configuration / Vineyards, Patches and Rows* window.

Exercise 4: Setting up Lots

Under *Configuration / Lots ...*

Set up a new Lot called Yellow Box Chardonnay, including only the Yellow Box – Chardonnay patch.

Set up a new Lot called Eucalyptus Shiraz, including the following patches: Yellow Box – Shiraz, Red Gum - Shiraz A, Red Gum - Shiraz B.

Exercise 5: Setting up seasons

To do this exercise you must have completed Exercises 2 to 4.

In the 1998 Season, set up the Yellow Box Chardonnay Lot for sampling and forecasting with Grapegrower Chardonnay as the Product type. Refer to the example of the Vine structure form for the Yellow Box – Chardonnay patch in Exercise 1 on page 40 for details of sectors and sector length.

Also, in the 1998 Season, set up the Eucalyptus Shiraz Lot with Grapegrower Shiraz as the Product type, referring to the Vine structure forms on page 40 for Patch details.

Repeat for Seasons 1999, 2000 and 2001.

Note! You must do this for Grape Forecaster to work properly in the rest of this exercise.

See Exercise 6 at the end of Chapter 3.

